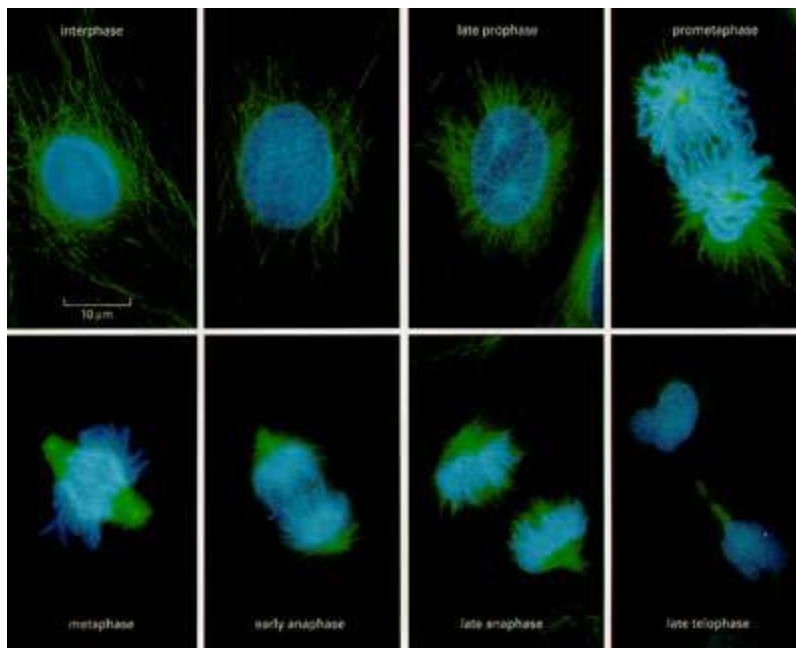


Cellular Turnover Rates & Product B

The body's ability to heal itself is amazingly powerful. Our cells replace themselves after so many days, months or years depending on what type of cell it is. Given the right support at the cellular level you can really heal and repair whole systems in the body.



According to several reliable sources our:

- Intestinal Lining Cells replace themselves every 5 days,
- Skin Surface Cells replace themselves every 14 days,
- Lung Surface Cells replace themselves 14-21 days,
- Red Blood Cells replace themselves every 120 days,
- Deep Lung Cells replace themselves every 400 days,
- Liver Cells replace themselves every 300-500 days,
- Bone Cells replace themselves every 10-15 years,

New research has shown that even our Heart Muscle Cells replace themselves very slowly, between 1% and .5% of total cells per year. Don't you want longer telomeres on all these new cells? With the support of Product B we can create younger and healthier cells throughout our bodies.

When asked "When will I feel different using Product B?" Reply with a question "Do you feel your cells die? (Let it sink in) Do you feel your new cells being replaced?"

You are undergoing an upgrade, developing a refinement, and moving up the octave of health, re-activating the tips on your chromosomes. Can you see it in the mirror yet? You are morphing into a healthier human everyday.

Transformation is constant and with Product B as the director, the body is becoming newer and more beautiful. Take photos as you go and keep a journal. "Why, I feel regenerated!" you'll declare in time. And you truly are, top to bottom, inside and out.